



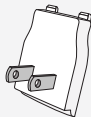
Quick Start Guide

yardpro.com | [@yardproapp](https://twitter.com/yardproapp)

What you get



YardPro Hub

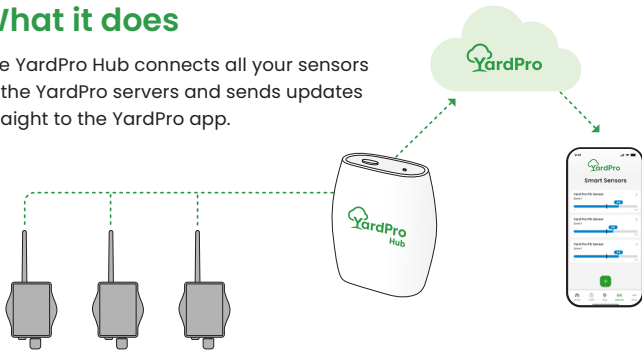


Power Plug

Connect up to **200 sensors within a mile** to get instant alerts for leaks, stuck valves, inactive zones, and system performance.

What it does

The YardPro Hub connects all your sensors to the YardPro servers and sends updates straight to the YardPro app.

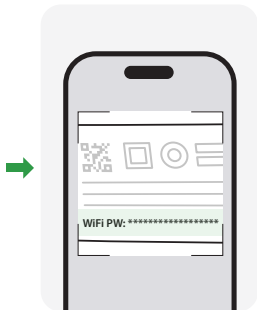


Step 1

Power up your Hub



Attach the plug to the back of your YardPro Hub.



Before plugging in, **take a photo of the back sticker** to save your Hub's Wi-Fi password.



Plug your Hub into an indoor outlet near a window.

Step 1 Power up your Hub (continued)



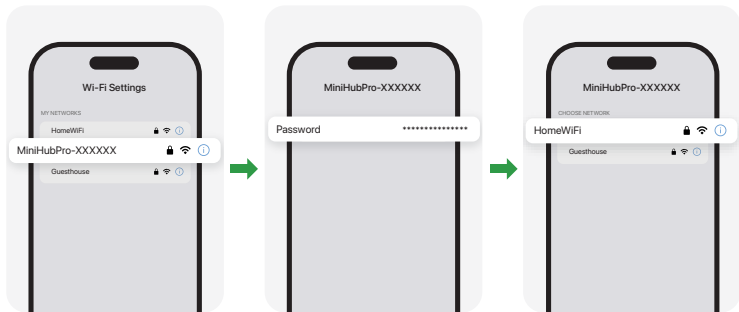
Wait for the top light to blink orange.
This means your Hub is ready to connect to Wi-Fi.



The YardPro Hub is designed for indoor use. If installing outdoors, place it in a weather-resistant enclosure.

Step 2

Connect to Wi-Fi

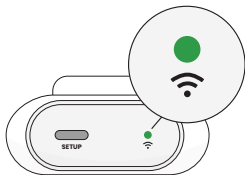


On your smartphone, open Wi-Fi settings and select the network named MiniHubPro-XXXXXX.



Enter the password from the back sticker (the one you photographed earlier).

Once connected, select your home Wi-Fi network and enter its password.

Step 2 Connect to WiFi (continued)



Check the Hub light

-  Blinking orange = Ready to connect
-  Solid green = Success! Your Hub is online and connected to YardPro servers.

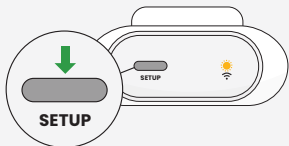


You're all set!

Your YardPro Hub is now connected and ready to link with your sensors.

Troubleshooting

Not connecting? Hold down the Setup button for **8–10 seconds** until the light blinks orange, then restart the Wi-Fi setup.



Need help?

Scan the QR code for quick **how-to videos**.

Go to **YardChat** to connect with other users and ask questions. Email us at **support@yardpro.com**. Our team is happy to help!



Device specifications

Wi-Fi: 2.4 GHz only

Range: 1 mile

Temperature operating range: 0°C to 40°C

Power type: DC 5V / 2A, wall plug with internal power module (IRM-10-5)

Dimensions: L:90 x H:80 x D:40mm

Weight: approx. 200g

For indoor use only.

FCC compliance statement

The YardPro Hub (Model #YP-HB-201) consists of FCC certified products. One of the key components is the Versatile LoRaWAN Indoor MiniHub Pro Gateway, manufactured by Brown Communications, which has been tested and approved under FCC ID 2AAS9-TBMH10. The device complies with FCC Part 15.247 requirements for spread spectrum and digital transmission systems. Testing was performed by the International Certification Corp. in Taiwan, with evaluations covering conducted and radiated emissions, occupied bandwidth, spectral density, and spurious emissions.

The YardPro Hub is authorized for operation in the 923.3–927.5 MHz LoRaWAN band as well as the 2.412–2.462 GHz Wi-Fi band. Maximum conducted output power was measured at approximately 0.422 watts in the LoRaWAN band and 0.251 watts in the 2.4 GHz Wi-Fi band. Results confirmed that the unit meets or exceeds requirements for 6 dB bandwidth, occupied bandwidth, and spurious emission limits. Conducted emissions on AC mains were also tested and found to be within FCC limits.

As part of its FCC compliance, the device requires that its antennas be installed with a

minimum separation distance of 20 cm from all persons. It may not be co-located or operated in conjunction with other antennas or transmitters. Installation instructions and operating conditions must be provided to end users and installers to ensure RF exposure compliance.

This certification confirms that the YardPro Hub incorporates components that meet FCC regulatory standards, ensuring both reliable operation and safe deployment.

Limited warranty

YardPro products come with a one (1) year limited warranty covering defects in materials or workmanship. If a problem occurs within the first year, YardPro will repair or replace your product free of charge. Warranty does not cover damage from improper use or installation.

Do not use your product until you have read the terms of this warranty. If you do not agree, return the product within 30 days of purchase to YardPro for a refund. Any tampering, disassembly, modification, or unauthorized repair of the YardPro Hub or YardPro sensors will void this warranty and may result in the product no longer meeting FCC compliance standards. Only authorized service performed by YardPro will be covered under the warranty.

We are committed to being open and transparent about how we use data. We will always ask for permission before sharing personally identifiable information like your email address, and we keep your data safe.